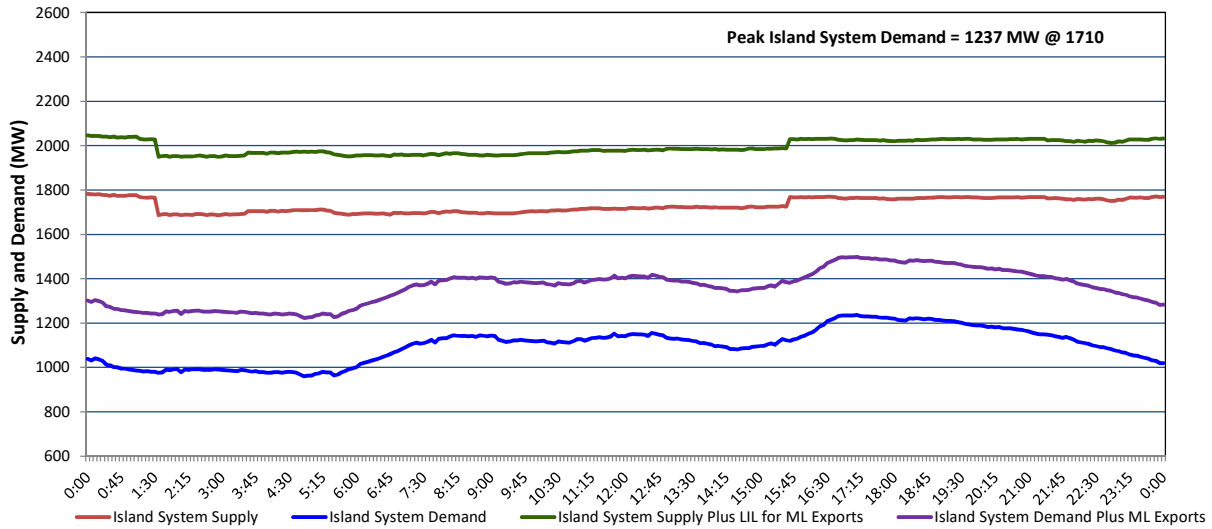


Newfoundland Labrador Hydro (NLH) Supply and Demand Status Report Filed Monday, December 09, 2024

Section 1 Island Interconnected System - Supply, Demand & Exports Actual 24 Hour System Performance For Friday, December 06, 2024



Island Supply Notes For December 06, 2024

- A As of 0000 hours, October 20, 2024, Holyrood Unit 1 unavailable due to forced extension to planned outage (170 MW).
- B As of 2000 hours, December 05, 2024, Paradise River Unit unavailable due to forced outage (8 MW).
- C At 0133 hours, December 06, 2024, Hinds Lake Unit unavailable due to forced outage (75 MW).
- D At 1536 hours, December 06, 2024, Granite Canal Unit available (40 MW).
- E At 2351 hours, December 06, 2024, Labrador Island Link available (700 MW) - Bipole.

Section 2 Island Interconnected System - Supply, Demand & Outlook

Sat, Dec 07, 2024	Island System Outlook ²	Seven-Day Forecast	Island System Daily Peak Demand (MW)	
			Forecast ⁸	Adjusted ⁶
Island System Supply: ⁴	1,871 MW	Saturday, December 7, 2024	1,335	1,255
NLH Island Generation: ^{3,7}	1,440 MW	Sunday, December 8, 2024	1,280	1,200
NLH Island Power Purchases: ⁵	115 MW	Monday, December 9, 2024	1,310	1,230
NP and CBPP Owned Generation:	215 MW	Tuesday, December 10, 2024	1,390	1,310
LIL/ML Net Imports to Island: ⁹	101 MW	Wednesday, December 11, 2024	1,260	1,180
		Thursday, December 12, 2024	1,105	1,025
7-Day Island Peak Demand Forecast:	1,390 MW	Friday, December 13, 2024	1,165	1,085

Island Supply Notes For December 07, 2024

- Notes:
1. Generation outages for running and corrective maintenance are included. These are not unusual for power system operations. They generally do not impact customer supply. Hydro schedules outages to system equipment whenever possible to coincide with periods when customer demands are low and sufficient supply reserves are available. However, from time to time equipment outages are necessary and reserves may be impacted.
 2. As of 0800 Hours.
 3. Gross continuous unit output.
 4. Gross output from all Island sources (including Note 4).
 5. NLH Island Power Purchases include: ML Imports, Exploits Generation, Rattle Brook, Star Lake, Wind Generation and capacity assistance (when applicable).
 6. Adjusted for interruptible load and the impact of voltage reduction when applicable.
 7. Due to limitations inherent in the design of combustion turbines, the output of combustion turbines may be reduced in the event that ambient temperatures exceed the threshold required for full rated output. This threshold is dependent on the design of each turbine.
 8. Does not include ML Exports.
 9. LIL Import sunk in the Island System. Actual LIL flows will be restricted by various system conditions including, but not limited to, Island Load, ML Exports and Avalon Unit status.

Section 3 Island Peak Demand and Exports Information Previous Day Actual Peak and Current Day Forecast Peak

Fri, Dec 06, 2024	Island Peak Demand ¹⁰	17:10	1,237 MW
	Exports at Peak		262 MW
	LIL Net Imports to Island		187 MWh
Sat, Dec 07, 2024	Forecast Island Peak Demand		1,335 MW

- Notes: 10. Island Demand is supplied by NLH generation and purchases, LIL Imports plus generation owned and operated by Newfoundland Power and Corner Brook Pulp & Paper (Deer Lake Power, DLP).